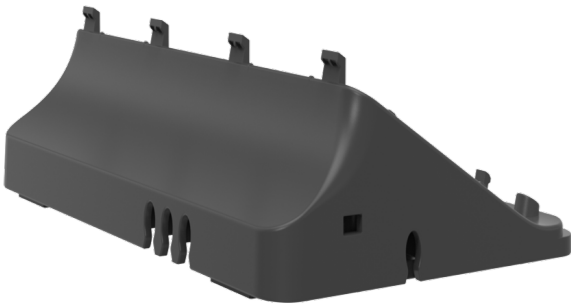


# Yealink CTP25 Mount Kits Datasheet

## Introduction

The Mount Kits are respectively used for CTP25 deployment:

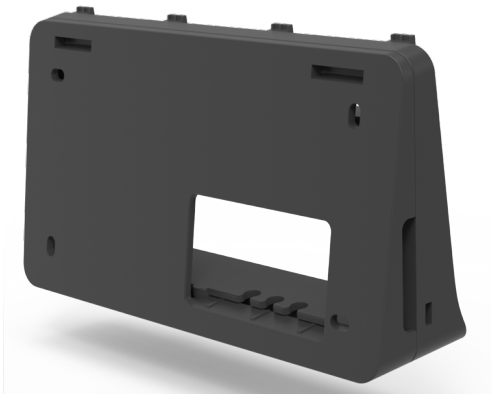
1. Desk Stand (Low/High): place on the table
2. Wall Mount: mount on a wall
3. Table Lock Kit: mount on the table



**Desk Stand(Low)**



**Desk Stand(High)**



**Wall-Mounted**



**Table Lock Kit**

## Specification

Parameter	Description
Physical Feature	Dimension (W x D x H): 704 x 802 x 148 mm Carton Meas: 829 x 108 x 182mm

	N.W/CTN: 3.29kg G.W/CTN: 3.49kg
--	------------------------------------

## Device Compatibility

For more information about mounts compatibility lists, refer to [Mounts Compatibility Lists](#).